

Test Report

Report No.: U00021904241876

Query Password: QW3065

Date: May 27, 2019

Page 1 of 14

Applicant: SHENZHEN ATTEN TECHNOLOGY CO., LTD.**Contact information:** 8F, Building 2, Senyang High-tech Park, 7 West Road High-tech Park, Guangming New District, Shenzhen, China.**The following sample(s) was (were) submitted and identified by client as:**

Sample Name : Smoking Instrument
Model No. : ST-1016
Sample Received Date : May 7, 2019
Testing Period : From May 7, 2019 to May 27, 2019
Test Request : Please refer to next page(s).
Test Result(s) : Please refer to next page(s).

Signed for and on behalf of Shen Zhen UONE Test Co., LTD.

Prepared by



Anna Li

Checked by



Nora Deng

Approved by



Pascal Shi

This report is valid only with a valid digital signature. The digital signature may be available only under the Adobe software above version 7.0.

Test Report

Report No.: U00021904241876

Query Password: QW3065

Date: May 27, 2019

Page 2 of 14

Summary of test results:**TEST REQUEST**

RoHS Directive 2011/65/EU and its subsequent amendments & Directive (EU) 2015/863

To determine Lead (Pb), Cadmium(Cd), Mercury(Hg), Hexavalent Chromium(Cr(VI)),

(1) Polybrominated Biphenyls (PBBs) and Polybrominated DiphenylEthers (PBDEs)
content by screening test and chemical test

(2) To determine Phthalates (DBP, BBP, DEHP, DIBP) content by chemical test

CONCLUSION**PASS****PASS**

This report is valid only with a valid digital signature. The digital signature may be available only under the Adobe software above version 7.0.

Test Report

Report No.: U00021904241876

Query Password: QW3065

Date: May 27, 2019

Page 3 of 14

Test Material List

Material No.	Description (Location)	Photo(s) of tested materials
1	White plastic(cable tie, smoking instrument)	
2	Silvery metal(screw, smoking instrument)	
3	Silvery metal(long screw, smoking instrument)	
4	White plastic(sheet, smoking instrument)	
5	Black foam(cushion, smoking instrument)	
6	White adhesive plastic with black printing(label, smoking instrument)	
7	Silvery adhesive plastic with black printing(label, smoking instrument)	
8	Black plastic(shell, smoking instrument)	
9	Black adhesive plastic(sticker, smoking instrument)	
10	Black plastic with white printing(button, power switch, smoking instrument)	
11	Golden metal(tube, power switch)	
12	Dull silvery metal(spring, power switch)	
13	Coppery metal with silvery plating(contact, power switch)	
14	Silvery metal(connector, power switch)	
15	Black plastic(shell, power switch)	
16	Silvery metal(connector, power switch)	
17	Blue body(capacitor, power switch)	
18	White plastic(pin holder, PCB)	
19	Silvery metal(pin, power switch)	
20	Green PCB	
21	Silvery solder(PCB)	

This report is valid only with a valid digital signature. The digital signature may be available only under the Adobe software above version 7.0.

Test Report

Report No.: U00021904241876

Query Password: QW3065

Date: May 27, 2019

Page 4 of 14

Material No.	Description (Location)	Photo(s) of tested materials
22	Silvery metal(frame, PCB)	
23	White plastic(holder, PCB)	
24	Silvery metal(terminal, PCB)	
25	Black soft plastic(wire jacket, PCB)	
26	Red soft plastic(wire jacket, PCB)	
27	Coppery metal with silvery plating(wire, PCB)	
28	Black plastic with white plating(shell, capacitor, PCB)	
29	Silvery metal(shell, capacitor)	
30	Black soft rubber(base, capacitor)	
31	Brown paper with liquid(film, capacitor)	
32	Silvery metal(foil, capacitor)	
33	Dull silvery metal(foil, capacitor)	
34	Silvery metal(pin, capacitor)	
35	Red body(capacitor, PCB)	
36	Black body(ec, PCB)	
37	Yellow body(LED, PCB)	
38	Black body(resistor, PCB)	
39	Black body(ic, PCB)	
40	Green PCB	
41	Silvery solder(PCB)	
42	White plastic(holder, power cable)	
43	Silvery metal(terminal, power cable)	
44	Silvery metal(connector, power cable)	
45	Blue soft plastic(wire jacket, power cable)	
46	Coffee soft plastic(wire jacket, power cable)	
47	Yellow/green soft plastic(wire jacket, power cable)	
48	Black soft plastic(cable jacket, power cable)	
49	Silvery metal(edge, fuse, power cable)	

This report is valid only with a valid digital signature. The digital signature may be available only under the Adobe software above version 7.0.

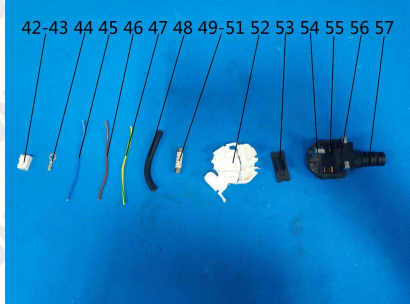
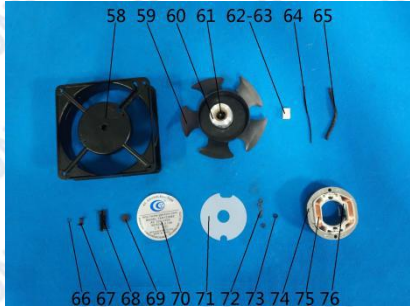
Test Report

Report No.: U00021904241876

Query Password: QW3065

Date: May 27, 2019

Page 5 of 14

Material No.	Description (Location)	Photo(s) of tested materials
50	White camera(shell, fuse, power cable)	 <p>42-43 44 45 46 47 48 49-51 52 53 54 55 56 57</p>
51	Silvery metal(wire, power cable)	
52	White plastic(frame, plug, power cable)	
53	Black plastic(cap, plug, power cable)	
54	Golden metal with silvery plating(pin, plug, power cable)	
55	Coppery metal(connector, plug, power cable)	
56	Black plastic(frame, plug, power cable)	
57	Black plastic(shell, plug, power cable)	 <p>58 59 60 61 62-63 64 65</p> <p>66 67 68 69 70 71 72 73 74 75 76</p>
58	Silvery metal with black coating(shell, fan, smoking instrument)	
59	Black plastic(blade, fan)	
60	Silvery magnet(core, fan)	
61	Silvery metal(pin, fan)	
62	White plastic(holder, fan)	
63	Silvery metalterminal, fan)	
64	Black soft plastic(wire jacket, fan)	
65	Black soft plastic(sleeve, fan)	
66	Silvery metal with black coating(fixer, fan)	
67	Silvery metal with black coating(tie, fan)	
68	Black soft plastic(sleeve, fan)	
69	Black adhesive plastic(sticker, fan)	
70	Silvery adhesive plastic with black/blue printing(label, fan)	
71	White plastic(sheet, fan)	
72	Silvery metal with black coating(gasket, fan)	
73	Black soft plastic(gasket, fan)	
74	Silvery metal(plate, fan)	
75	Coppery metal(coil, fan)	
76	White plastic(radiator, fan)	

This report is valid only with a valid digital signature. The digital signature may be available only under the Adobe software above version 7.0.

Test Report

Report No.: U00021904241876

Query Password: QW3065

Date: May 27, 2019

Page 6 of 14

Test Result(s):

(1) Lead (Pb), Cadmium(Cd), Mercury(Hg), Hexavalent Chromium(Cr(VI)), Polybrominated Biphenyls (PBBs) and Polybrominated DiphenylEthers (PBDEs)

Test Method: IEC62321-3-1: 2013, IEC62321-4: 2013+A1:2017, IEC62321-5: 2013, IEC62321-6: 2015, IEC 62321-7-1:2015, IEC 62321-7-2: 2017, analyzed by EDXRF & ICP-OES & GC-MS & UV-Vis.

No.	EDXRF Result ⁽¹⁾					Chemical Result ⁽²⁾ (mg/kg)	Remark ⁽³⁾	Conclusion
	Pb	Cd	Hg	Cr	Br			
1	BL	BL	BL	BL	BL	—	—	PASS
2	BL	BL	BL	BL	NA	—	—	PASS
3	BL	BL	BL	BL	NA	—	—	PASS
4	BL	BL	BL	BL	BL	—	—	PASS
5	BL	BL	BL	BL	BL	—	—	PASS
6	BL	BL	BL	BL	BL	—	—	PASS
7	BL	BL	BL	BL	BL	—	—	PASS
8	BL	BL	BL	BL	BL	—	—	PASS
9	BL	BL	BL	BL	BL	—	—	PASS
10	BL	BL	BL	BL	BL	—	—	PASS
11	BL	BL	BL	BL	NA	—	—	PASS
12	BL	BL	BL	BL	NA	—	—	PASS
13	BL	BL	BL	BL	NA	—	—	PASS
14	BL	BL	BL	BL	NA	—	—	PASS
15	BL	BL	BL	BL	BL	—	—	PASS
16	BL	BL	BL	BL	NA	—	—	PASS
17	BL	BL	BL	BL	BL	—	—	PASS
18	BL	BL	BL	BL	BL	—	—	PASS
19	BL	BL	BL	BL	NA	—	—	PASS
20	BL	BL	BL	BL	X	PBBs: N.D. PBDEs: N.D.	—	PASS
21	BL	BL	BL	BL	NA	—	—	PASS
22	BL	BL	BL	BL	NA	—	—	PASS

This report is valid only with a valid digital signature. The digital signature may be available only under the Adobe software above version 7.0.

Test Report

Report No.: U00021904241876

Query Password: QW3065

Date: May 27, 2019

Page 7 of 14

No.	EDXRF Result ⁽¹⁾					Chemical Result ⁽²⁾ (mg/kg)	Remark ⁽³⁾	Conclusion
	Pb	Cd	Hg	Cr	Br			
23	BL	BL	BL	BL	BL	—	—	PASS
24	BL	BL	BL	BL	NA	—	—	PASS
25	BL	BL	BL	BL	BL	—	—	PASS
26	BL	BL	BL	BL	BL	—	—	PASS
27	BL	BL	BL	BL	NA	—	—	PASS
28	BL	BL	BL	BL	BL	—	—	PASS
29	BL	BL	BL	BL	NA	—	—	PASS
30	BL	BL	BL	BL	BL	—	—	PASS
31	BL	BL	BL	BL	BL	—	—	PASS
32	BL	BL	BL	BL	NA	—	—	PASS
33	BL	BL	BL	BL	NA	—	—	PASS
34	BL	BL	BL	BL	NA	—	—	PASS
35	BL	BL	BL	BL	BL	—	—	PASS
36	BL	BL	BL	BL	BL	—	—	PASS
37	BL	BL	BL	BL	BL	—	—	PASS
38	BL	BL	BL	BL	BL	—	—	PASS
39	BL	BL	BL	BL	BL	—	—	PASS
40	BL	BL	BL	BL	X	PBBs: N.D. PBDEs: N.D.	—	PASS
41	BL	BL	BL	BL	NA	—	—	PASS
42	BL	BL	BL	BL	BL	—	—	PASS
43	BL	BL	BL	BL	NA	—	—	PASS
44	BL	BL	BL	BL	NA	—	—	PASS
45	BL	BL	BL	BL	BL	—	—	PASS
46	BL	BL	BL	BL	BL	—	—	PASS
47	BL	BL	BL	BL	BL	—	—	PASS
48	BL	BL	BL	BL	BL	—	—	PASS

This report is valid only with a valid digital signature. The digital signature may be available only under the Adobe software above version 7.0.

Test Report

Report No.: U00021904241876

Query Password: QW3065

Date: May 27, 2019

Page 8 of 14

No.	EDXRF Result ⁽¹⁾					Chemical Result ⁽²⁾ (mg/kg)	Remark ⁽³⁾	Conclusion
	Pb	Cd	Hg	Cr	Br			
49	BL	BL	BL	BL	NA	—	—	PASS
50	BL	BL	BL	BL	BL	—	—	PASS
51	BL	BL	BL	BL	NA	—	—	PASS
52	BL	BL	BL	BL	BL	—	—	PASS
53	BL	BL	BL	BL	BL	—	—	PASS
54	BL	BL	BL	BL	NA	—	—	PASS
55	BL	BL	BL	BL	NA	—	—	PASS
56	BL	BL	BL	BL	BL	—	—	PASS
57	BL	BL	BL	BL	BL	—	—	PASS
58	BL	BL	BL	BL	NA	—	—	PASS
59	BL	BL	BL	BL	BL	—	—	PASS
60	BL	BL	BL	BL	BL	—	—	PASS
61	BL	BL	BL	BL	NA	—	—	PASS
62	BL	BL	BL	BL	BL	—	—	PASS
63	BL	BL	BL	BL	NA	—	—	PASS
64	BL	BL	BL	BL	BL	—	—	PASS
65	BL	BL	BL	BL	BL	—	—	PASS
66	BL	BL	BL	BL	NA	—	—	PASS
67	BL	BL	BL	BL	NA	—	—	PASS
68	BL	BL	BL	BL	BL	—	—	PASS
69	BL	BL	BL	BL	BL	—	—	PASS
70	BL	BL	BL	BL	BL	—	—	PASS
71	BL	BL	BL	BL	BL	—	—	PASS
72	BL	BL	BL	BL	NA	—	—	PASS
73	BL	BL	BL	BL	BL	—	—	PASS
74	BL	BL	BL	BL	NA	—	—	PASS
75	BL	BL	BL	BL	NA	—	—	PASS

This report is valid only with a valid digital signature. The digital signature may be available only under the Adobe software above version 7.0.

Test Report

Report No.: U00021904241876

Query Password: QW3065

Date: May 27, 2019

Page 9 of 14

No.	EDXRF Result ⁽¹⁾					Chemical Result ⁽²⁾ (mg/kg)	Remark ⁽³⁾	Conclusion
	Pb	Cd	Hg	Cr	Br			
76	BL	BL	BL	BL	BL	—	—	PASS

Remark:

- (1) ① Results are obtained by EDXRF for primary screening, and further wet chemical testing by ICP-OES (for Cd, Pb, Hg), UV-VIS (for Cr(VI)) and GC/MS (for PBBs, PBDEs) is recommended to be performed, if an inconclusive result was found (as "X" in below table) (unit: mg/kg).
- ② OL = Over Limit, BL = Below Limit, X = Inconclusive, NA = Not Applicable.
- ③ The EDXRF screening test for RoHS elements – The reading may be different to the actual content in the sample be of non-uniformity composition.

Element	Polymer	Metal	Composite Materials
Cd	$BL \leq (70-3\sigma) < X < (130+3\sigma) \leq OL$	$BL \leq (70-3\sigma) < X < (130+3\sigma) \leq OL$	$LOD < X < (150+3\sigma) \leq OL$
Pb	$BL \leq (700-3\sigma) < X < (1300+3\sigma) \leq OL$	$BL \leq (700-3\sigma) < X < (1300+3\sigma) \leq OL$	$BL \leq (500-3\sigma) < X < (1500+3\sigma) \leq OL$
Hg	$BL \leq (700-3\sigma) < X < (1300+3\sigma) \leq OL$	$BL \leq (700-3\sigma) < X < (1300+3\sigma) \leq OL$	$BL \leq (500-3\sigma) < X < (1500+3\sigma) \leq OL$
Br	$BL \leq (300-3\sigma) < X$	NA	$BL \leq (250-3\sigma) < X$
Cr	$BL \leq (700-3\sigma) < X$	$BL \leq (700-3\sigma) < X$	$BL \leq (500-3\sigma) < X$

Units and limits in EU RoHS Directive 2011/65/EU:

Element	Pb	Cd	Hg	Cr(VI)	PBBs(single)	PBDEs(single)
Unit	mg/kg	mg/kg	mg/kg	mg/kg	mg/kg	mg/kg
Limit	1000	100	1000	1000	1000	1000

- (2) ① mg/kg = ppm = 0.0001%, N.D. = Not Detected (Less than RL).

② Unit and RL (Report limit) in wet chemical test.

Element	Pb	Cd	Hg	Cr(VI)	PBBs(single)	PBDEs(single)
Unit	mg/kg	mg/kg	mg/kg	mg/kg	mg/kg	mg/kg
RL	2	2	2	2	5	5

③ According to IEC 62321-7-1:2015, result on Cr(VI) for metal sample is shown as Positive/Negative.

Negative = Absence of Cr(VI) coating, Positive = Presence of Cr(VI) coating.

Storage condition and production date of the tested sample are unavailable and thus results of Cr(VI) represent status of the sample at the time of testing.

This report is valid only with a valid digital signature. The digital signature may be available only under the Adobe software above version 7.0.

Test Report

Report No.: U00021904241876

Query Password: QW3065

Date: May 27, 2019

Page 10 of 14

④ According to IEC 62321-3-1:2013, this column represents the results of wet chem test.

(3) This column represents the exempted decoration of material or other related testing sample's information.

(2) Phthalates (DBP, BBP, DEHP, DIBP) content

Test Method: IEC 62321-8: 2017, analyzed by gas chromatographic- mass spectrometer (GC-MS).

Substances	DBP	BBP	DEHP	DIBP	Conclusion
CAS No.	84-74-2	85-68-7	117-81-7	84-69-5	
Limit (mg/kg)	1000	1000	1000	1000	
RL (mg/kg)	30	30	30	30	
Material No.	Result (mg/kg)				
1	N.D.	N.D.	N.D.	N.D.	PASS
4	N.D.	N.D.	N.D.	N.D.	PASS
5	N.D.	N.D.	N.D.	N.D.	PASS
6	N.D.	N.D.	N.D.	N.D.	PASS
7	N.D.	N.D.	N.D.	N.D.	PASS
8	N.D.	N.D.	N.D.	N.D.	PASS
9	N.D.	N.D.	N.D.	N.D.	PASS
10	N.D.	N.D.	N.D.	N.D.	PASS
15	N.D.	N.D.	N.D.	N.D.	PASS
18	N.D.	N.D.	N.D.	N.D.	PASS
20	N.D.	N.D.	N.D.	N.D.	PASS
23	N.D.	N.D.	N.D.	N.D.	PASS
25	N.D.	N.D.	N.D.	N.D.	PASS
26	N.D.	N.D.	N.D.	N.D.	PASS
28	N.D.	N.D.	N.D.	N.D.	PASS
30	N.D.	N.D.	N.D.	N.D.	PASS
31	N.D.	N.D.	N.D.	N.D.	PASS
35	N.D.	N.D.	N.D.	N.D.	PASS
36	N.D.	N.D.	N.D.	N.D.	PASS
37	N.D.	N.D.	N.D.	N.D.	PASS

This report is valid only with a valid digital signature. The digital signature may be available only under the Adobe software above version 7.0.

Test Report

Report No.: U00021904241876

Query Password: QW3065

Date: May 27, 2019

Page 11 of 14

Substances	DBP	BBP	DEHP	DIBP	Conclusion
CAS No.	84-74-2	85-68-7	117-81-7	84-69-5	
Limit (mg/kg)	1000	1000	1000	1000	
RL (mg/kg)	30	30	30	30	
Material No.	Result (mg/kg)				
38	N.D.	N.D.	N.D.	N.D.	PASS
39	N.D.	N.D.	N.D.	N.D.	PASS
40	N.D.	N.D.	N.D.	N.D.	PASS
42	N.D.	N.D.	N.D.	N.D.	PASS
45	N.D.	N.D.	N.D.	N.D.	PASS
46	N.D.	N.D.	N.D.	N.D.	PASS
47	N.D.	N.D.	N.D.	N.D.	PASS
48	N.D.	N.D.	N.D.	N.D.	PASS
50	N.D.	N.D.	N.D.	N.D.	PASS
52	N.D.	N.D.	N.D.	N.D.	PASS
53	N.D.	N.D.	N.D.	N.D.	PASS
56	N.D.	N.D.	N.D.	N.D.	PASS
57	N.D.	N.D.	N.D.	N.D.	PASS
59	N.D.	N.D.	N.D.	N.D.	PASS
60	N.D.	N.D.	N.D.	N.D.	PASS
62	N.D.	N.D.	N.D.	N.D.	PASS
64	N.D.	N.D.	N.D.	N.D.	PASS
65	N.D.	N.D.	N.D.	N.D.	PASS
68	N.D.	N.D.	N.D.	N.D.	PASS
69	N.D.	N.D.	N.D.	N.D.	PASS
70	N.D.	N.D.	N.D.	N.D.	PASS
71	N.D.	N.D.	N.D.	N.D.	PASS
73	N.D.	N.D.	N.D.	N.D.	PASS
76	N.D.	N.D.	N.D.	N.D.	PASS

This report is valid only with a valid digital signature. The digital signature may be available only under the Adobe software above version 7.0.

Test Report

Report No.: U00021904241876

Query Password: QW3065

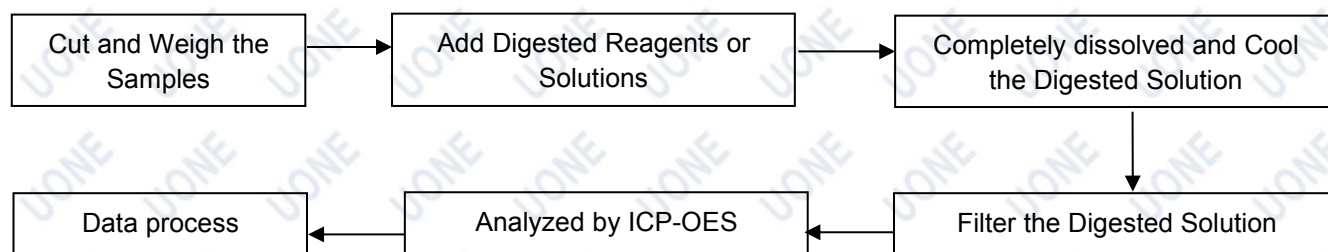
Date: May 27, 2019

Page 12 of 14

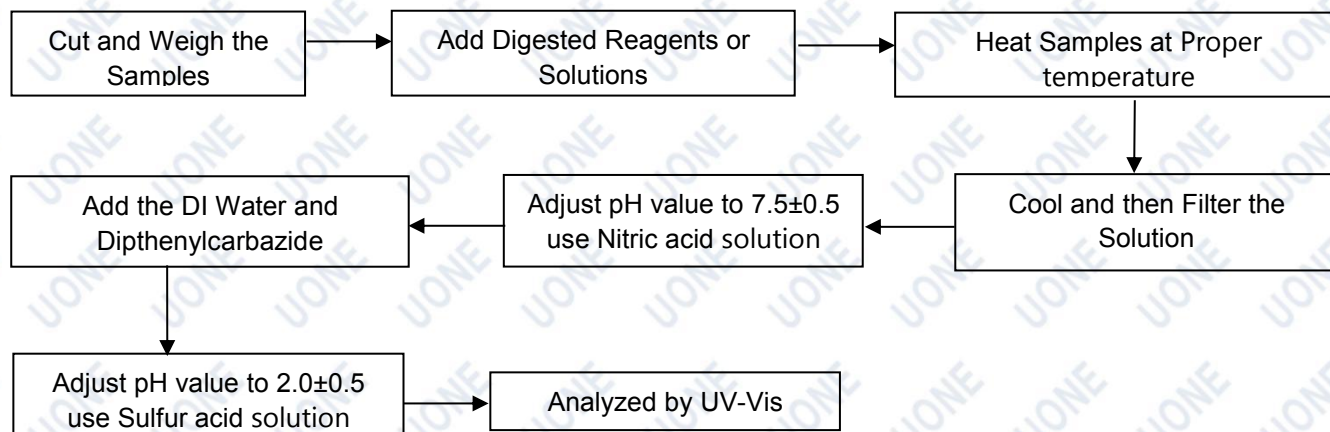
- Note:**
1. mg/kg = milligram per kilogram (ppm).
 2. RL = report limit.
 3. N.D.=not detected(less than RL).

Test Process Flow

1. Lead, Cadmium, Mercury



2. Hexavalent Chromium (Non-metal)



This report is valid only with a valid digital signature. The digital signature may be available only under the Adobe software above version 7.0.

Test Report

Report No.: U00021904241876

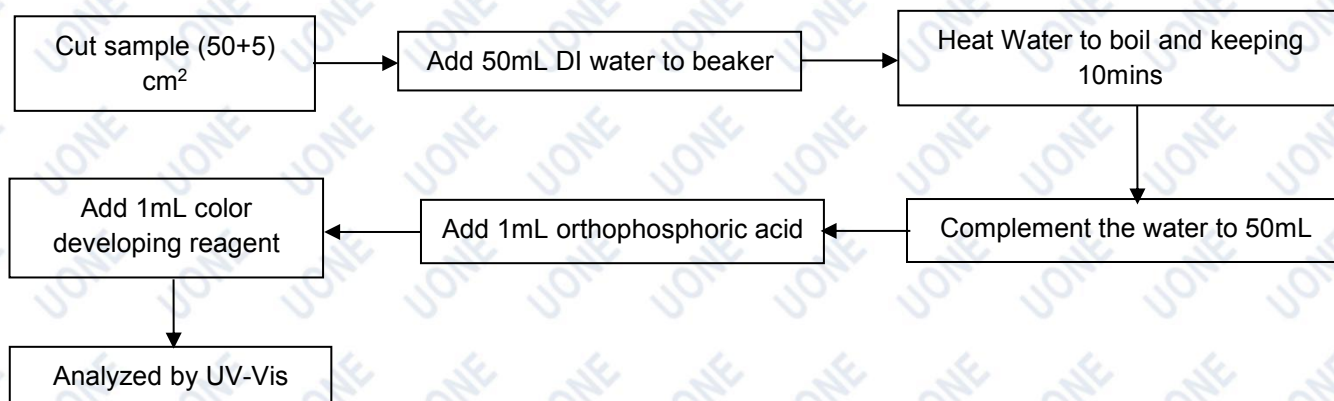
Query Password: QW3065

Date: May 27, 2019

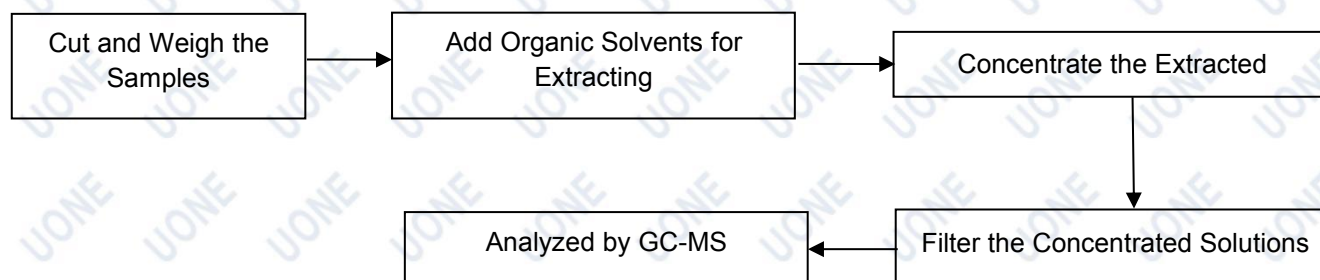
Page 13 of 14

Test Process Flow (Continued):

Hexavalent Chromium (Metal)



3. PBBs & PBDEs, Phthalates



This report is valid only with a valid digital signature. The digital signature may be available only under the Adobe software above version 7.0.

Test Report

Report No.: U000021904241876

Query Password: QW3065

Date: May 27, 2019

Page 14 of 14

Photo(s) of Sample:

*****End of Report*****

This report is considered invalidated without the Special Seal for Inspection of the UONE, This report shall not be altered, increased or deleted. The results shown in this test report refer only to the sample tested. Without written approval of UONE, this report shall not be copied and published as advertisement.

This report is valid only with a valid digital signature. The digital signature may be available only under the Adobe software above version 7.0.